

Go Green! on the Green

with a Solar Kit made in America
by Americans

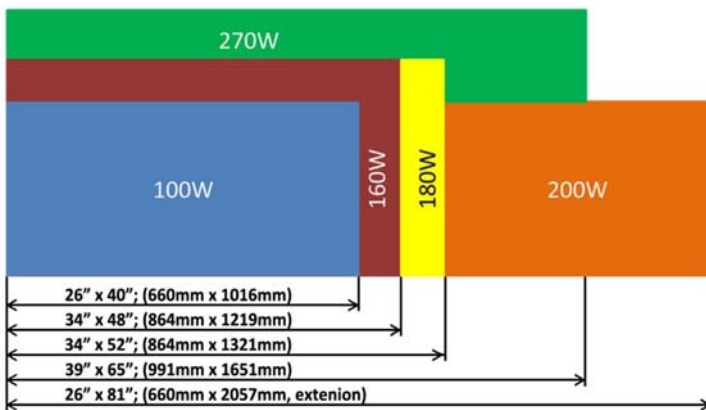


Solar Mobility LLC.

The Benefits of the GCPK Solar Charge Kit

1. Prolongs battery life by maintaining a charge and preventing the likelihood of its deep discharge below 20%, thereby extending battery life.
2. Extends the travel range of any Golf Cart by continuously charging the battery.
3. Provides unlimited charge from the sun, in use or parked, that reduces electricity cost.
4. Environmental friendly and help to reduce CO2s emission.

Golf Cart Solar Panel Dimension



Drawing is not to scale

Solar Panel Size & Specifications

Item	Golf Cart Solar Panel Size				
	100W	160W	180W	200W	270W
Watt	100W	160W	180W	200W	270W
Vmp	21.07	19.04	21.22	26.11	32.64
Voc	25.2	22.82	25.43	31.344	39.12
Imp	5	8.67	8.67	8.67	8.67
Isc	5.39	9.3	9.30	9.30	9.30
Cell efficiency (%)	19.35	19.8	19.8	19.8	19.8
Panel efficiency	17.50	18	18	16.8	18
No. Cells(5" or 6")	35 (5")	35 (6")	39 (6")	48 (6")	60 (6")
Panel dimension (in)	26 x 40 x 0.125	34 x 48 x 0.125	34 x 52 x 0.125 34 x 60 x 0.125(f)	2 x (26x41x0.125) 26 x 72 x 0.125 (f)	39 x 65 x 0.125
Panel dimension (mm)	660 x 1016 x 3	864 x 1219 x 3	864 x 1321 x 3 864 x 1524 x 3	2 x 660 x 1016 x 3 660 x 1829 x 3	991 x 1651 x 3
Controller ID (48V Battery)	SC-1448E-2A	SC-1651E-3A5-II	SC-1651E-3A5-II SC-1648E-3A8	SC-1948E-4A SC-1748E-4A2(f)	SC-2448E-5A9
Controller ID (36V Battery)	SC-1436E-2A4	none	SC-1636E-5A	none	none
Controller ID (72V Battery)	SC-1472E-1A4	SC-1476E-2A1-II	none	none	none

Custom sizes available



Even after the solar panel was damaged by golf balls the panel:

- still generates electricity, with some power loss:
- passed the safety current leakage test at 2640 VDC condition:

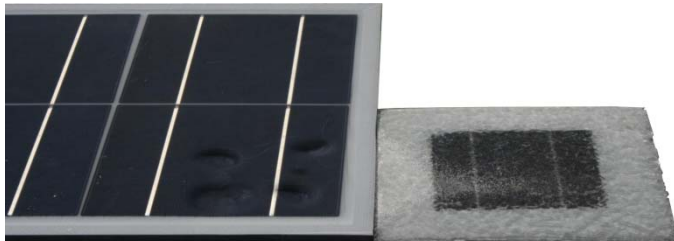
HOW IT WORKS - Photons from the light are absorbed by the panel's mono crystalline cells. The silicon in the cells acts as a semi-conductor and creates a stir of electron activity, creating the DC electricity. By using the sun light, Solar Mobility's solar panel and proprietary Maximum Power Point Tracking Charge Controller creates an applicable portion of your daily battery power need, any time of the year, to keep you on the move.

Included Parts

- 1- Solar Mobility Inc. Model GCPK Monocrystalline Polymer film Solar Panel and wiring set.
- 1- Maximum Power Point Tracking (MPPT) control charger with Volt Meter.
- 1- Battery wiring harness with battery ring connectors and Deutsch connector to plug into the (MPPT).
- 1- Solar panel Deutsch connector - attaches to the solar panel wire ends. America
- 1-Owner's instruction manual and Specifications:
- 1-Warranty Registration Card:
- 12 - Paired 3m dual lock fastener pads or (double stick tape) with adhesive backing.

TECHNICAL SPECIFICATION - Showing a proprietary 180 Watt light-weight, UL approved Mono Crystalline Polymer film panel technology, with Maximum Power Point Tracking charge controller that provides boost charging capability with safety shut-off protection; MADE IN THE USA WITH QUALITY COMPONENTS.

Shatterproof- After Damaged by Hammer

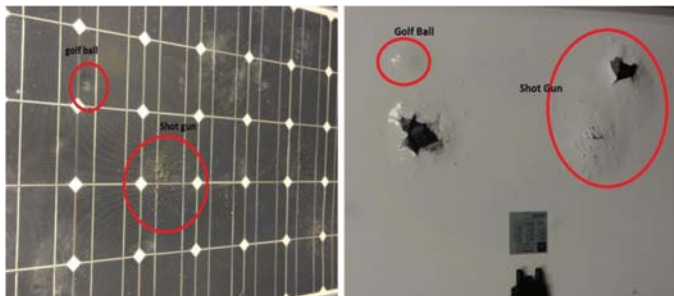


Left: Our Panel;

Right: Glass sample;

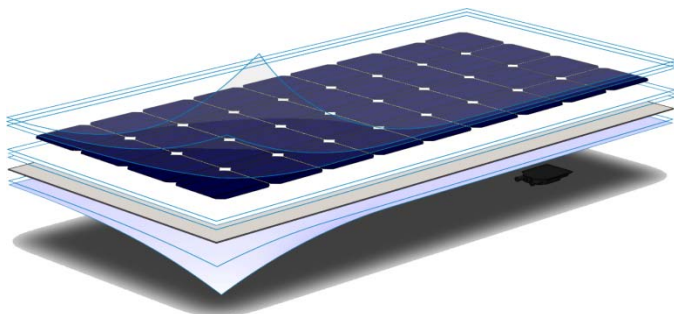
Our panel continues to generate power (>98%) after 1000 hrs. with DAMP test (IEC61215) there was no sign of degradation.

Still Has Power after Damages



Damaged by: Shot Gun, Golf ball, hails and fall tree branches...

Why use our Solar Panels?



Advanced technology & encapsulating material:

SOLAR CHARGER WITH MPPT



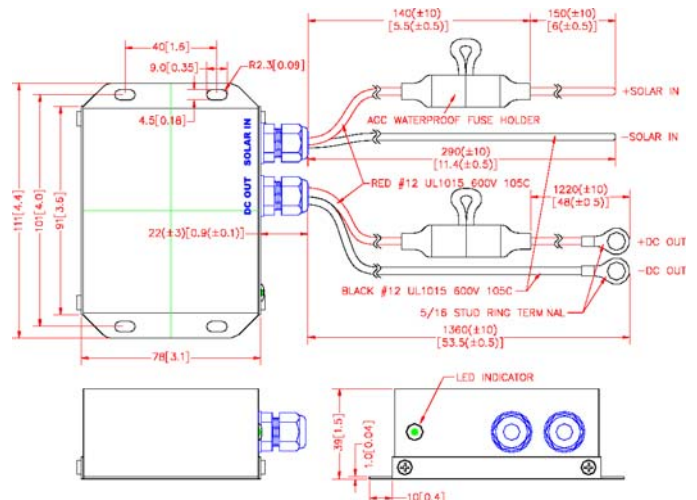
STANDARD FEATURES

- ◆ 1.8ADC MAXIMUM OUTPUT CURRENT
- ◆ 3-STAGE CHARGING METHOD
- ◆ AUTO-RESTART MODE
- ◆ INPUT UNDER-VOLTAGE PROTECTION
- ◆ INPUT OVER-VOLTAGE PROTECTION
- ◆ CURRENT LIMITING
- ◆ OVERLOAD PROTECTION
- ◆ SHORT CIRCUIT PROTECTION
- ◆ TEMPERATURE DERATED CHARGE
- ◆ AUTO MAINTENANCE MODE
- ◆ MPPT (MAXIMUM POWER POINT TRACKING)
- ◆ LED STATUS INDICATOR



Connection Block Diagram for SC-1448E-2A

MODE	LED	LED INDICATOR	CONDITION
OFF		Blank	1) Disconnected from Batteries -or- 2) Input Low/Over-Voltage Shutdown
Bulk Charge		Blink Green 1 sec ON / 1 sec OFF	Maximum Charge Current 1.8A (+/-0.5)
Absorption Charge		Blink Green 1 sec ON / 1 sec OFF	Maximum Charge Voltage 56V (+/-0.4)
Float Charge		Steady Green	Constant Float Voltage 54V (+/-0.4)
Over Voltage Auto Shutdown 1		Blink Red 5x - 0.5 sec ON / 0.5 sec OFF	Battery Voltage >58V (+/-0.4)



Visit My Web Site: www.solarmobilityinc.com

For more Information Contact Kurt at 509-851-3611 or Bob at 509-855-6522 or E-mail kurt@solarmobilityinc.com